



DANCEZING NEWS

APRIL 9TH 2021

DANCEZING NEWS

The birds are chirping, bluebells are beginning to flower, the days are longer and there's a real sense of optimism in the air.

Hopefully we will soon be back on the dance floor!

Looking forward to seeing you soon.

xx

DANCEZING NEWS BULLETIN

Spring photos • P. 2

Record breaker • P. 3
by Jill

April Fools Joke
Fun Facts - Bees • P. 4

Tutorials • P. 5

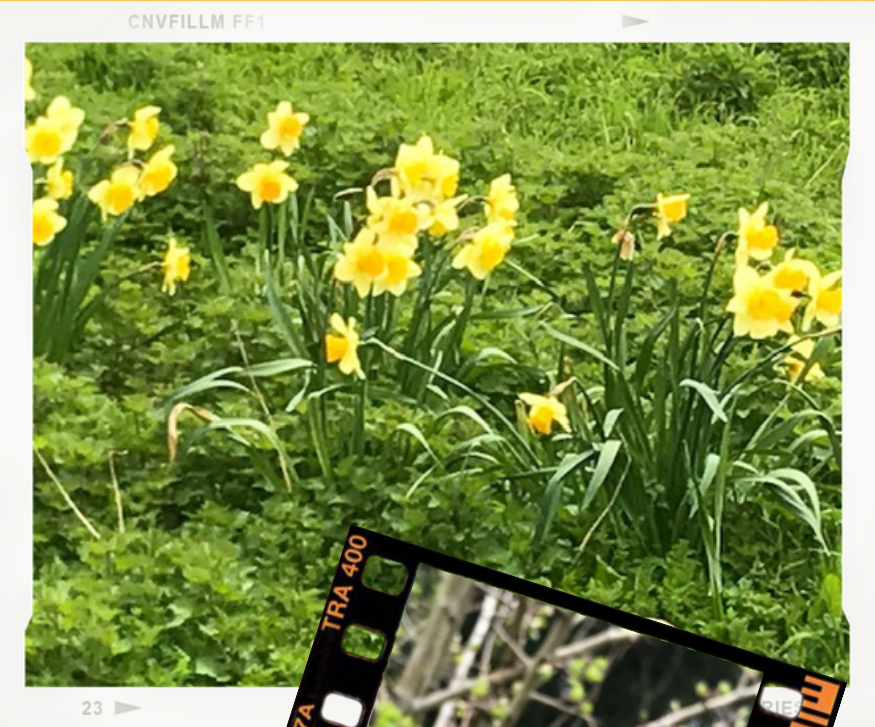
Eaten by a Bear • P. 6-7
by Bob

Brain teasers • P. 6

SPRING FEVER



I love Spring! Here are a few photos I have taken recently when out on my walks with the dogs.



RECORD BREAKER - JILL ROSSITER

In your news letter you spoke about World record breakers.

In the 1980's I took part in a tap a thon. I belonged to a tap class and we were asked to take part. We all had to learn this tap dance and then we met up with loads of dancers from East Surrey in Croydon one Saturday, which took place outside the Allders store.

We made the Guinness Book of Records by having the most tap dancers all doing the same dance. Lionel Blair was up on the stage encouraging us. It was great fun.

Jill



The most taps in one minute was 1,163 and was achieved by Anthony Morigerato (USA) at Eleanor's School of Dance in Albany, New York, USA, on 23 June 2011.

Roy Castle (UK) (1932-94), host of the BBC TV Record Breakers programme from 1972 to 1993, achieved one million taps in 23 hr 44 min at the Guinness World of Records exhibition, Piccadilly, London, UK, on 31 October - 1 November 1985.



DANCEZING



On 1st April, I sent an email stating that our club will now be known as "Dancesing" and when classes open we will be learning to sing as well as dance!

I can confirm that this was an **April Fool** and I will not be teaching singing. If you have heard me sing, you will be greatly relieved by this!



Almost 90% of wild plants and 75% of leading global crops depend on animal pollination. One out of every three mouthfuls of our food depends on pollinators.

Bees can be found living in so many locations, such as marshes, shingle, sand dunes, soft cliffs, heathlands, wetlands, chalk grasslands, quarries, gravel pits, sea walls and even post-industrial land.

If you find a bumblebee which appears to be struggling, it may be that it is just resting, particularly if the bee is a queen in early spring. If you think the bee is struggling the best thing to do is gently put the bee onto a bee-friendly flower.



If there are no bee-friendly flowers around, mix 50/50 white sugar and water to give the bumblebee a one-off energy boost, providing the carbohydrates it needs to fly. Simply offer a drop or two of sugar water up to the front end of the bee on a teaspoon or an upturned drinks cap in a sheltered place and allow the bee time to recuperate.

Honeybees have a dance move called the 'waggle dance'. It's not actually a dance move at all, but a clever way of communicating between themselves to tell their nestmates where to go to find the best source of food.

(It is not advisable to use brown sugar as it is harder for bees to digest and don't give bumblebees honey as this can contain pathogens.)



TUTORIAL DANCE VIDEOS - BEGINNER



Click on the dance title to view the tutorial video

BEGINNER LEVEL

[Do You Remember](#)

[Ruby Ruby](#)

[Maverick Shuffle](#)

[Honey I'm Good](#)

[Lipstick, Powder & Paint](#)

[The Lemon Tree](#)

[Until the Dawn](#)

[MD Honky Tonk](#)

[Bonaparte's Retreat](#)

[Coastin'](#)

[Little Rhumba](#)

[Simply Mambo](#)

[Stand Up & Boogie](#)

[Precious Time](#)

[Gently Does It](#)

[Feel the Way I Do](#)

[Dance Monkey](#)

[South Sea Shuffle](#)

[Primer Beso](#)

[Cowboy Charleston](#)

[Jo 'n' Jo Tango](#)

[Cha Cha Espana](#)

[Begin to Swing](#)

[Special Delivery](#)

[Nothing Compares](#)

[Under the Sun](#)

[Champagne Promise](#)

[My Pretty Belinda](#)

[Rocket to the Sun](#)

[Bye Bye Mambo](#)

[Love You Cha](#)

[Waltz Across Texas](#) - ELD 19/11/20

[Yes I Do!](#) - ELD 24/11/20

[Emergency](#) - ELD 26/11/20

[Tush Push](#) - ELD 11/12/20

[Piano Man](#) - ELD 12/1/21

[When You Smile](#) - ELD 16/2/21

[Click here to access a practice video with 10 beginner dances](#)

TUTORIAL DANCE VIDEOS - IMPROVER

[Gone West](#)

[Crystal Touch](#)

[Keep Young](#)

[La Fiesta Cubana](#)

[What A Man Gotta Do](#)

[Mack the Knife](#)

[Senorita La-La-La](#)

[Bumblebee](#)

[Guetta's Party](#)

[Stitch It Up](#)

[Pot of Gold](#)

[Elliot's Dream](#)

[Quando When Quando](#)

[Playboys](#)

[Black Coffee](#)

[Sunrise](#)

[Late Night Call](#) - ELD 19/11/20

[Cecilia](#) - ELD 24/11/20

[Half Past Nothin'](#) - ELD 1/12/20

[Jamaican Love](#) - ELD 8/12/20

[Modern Romance](#) - ELD 12/1/21

[Click here to access a practice video with 9 improver level dances](#)

TUTORIAL DANCE VIDEOS - INTERMEDIATE

[Chill Factor](#)

[Faithful Soul](#)

[Clap Happy](#)

[Vanotek Cha](#)

[Caribbean Pearl](#)

[Tough Love](#)

[Shakatak](#)

[SXE](#)

[Nancy Mulligan](#)

[Liquid Lunch](#)

[Moves](#)

[Drip Droppin'](#)

[Graffiti](#)

[Rolling Stone](#)

[Up](#) - ELD 24/11/20

[Wow Tokyo](#) - ELD 1/12/20

[Wintergreen](#) - ELD 12/1/21

[Click here to access a practice video with 9 intermediate level dances](#)

EATEN BY A BEAR

BY BOB B

The small town of Churchill has a population of about 1,000 and is situated in northern Manitoba on the edge of the Churchill River and Hudson Bay and linked to the rest of Canada only by rail and air. Established early in the 18th century as a trading post, this somewhat ramshackle community consists of Inuit, Cree and white settlers and is known as the "Polar Bear Capital of the World". For good reason, the fresh river water freezes over before the sea ice forms and every autumn migrating polar bears congregate in the area venturing out on the river ice while waiting for the pack ice to form in the Bay. Once the sea ice has formed they travel further out to hunt for their main winter food source, ringed seals.

Occasionally the bears amble into the town centre and the conservation authorities then utilise a number of non-lethal methods to persuade the bear to move elsewhere. Persistent offenders who venture into town too often are incarcerated in the quaintly named Polar Bear Holding Facility (or Polar Bear Jail) where they are held for about 30 days before being released outside the town.



Back in November 2012 Heather and I were able to witness these amazing creatures first hand, when we joined Natural Habitat for a three day trip to Churchill. We arrived late afternoon having flown from Winnipeg in an ancient but beautifully maintained charter aircraft and after an orientation tour of the town and an early dinner in our fairly basic accommodation set out for our first trip onto the tundra. There were twelve of us in the purpose-built Tundra Buggy, a big bus like machine on huge wheels which travelled slowly and fairly smoothly over the tundra towards a research station outside which a group of polar bears were known to gather. As well as large picture windows the Tundra Buggy had an open viewing platform at the rear and Lisa, our driver and guide told us very firmly not to dangle our arms or lean over the side.



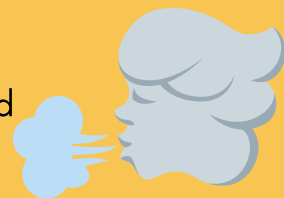
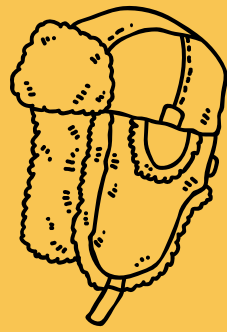
EATEN BY A BEAR

BY BOB BAILEY

This far north it is rather cold and that evening the temperature was about minus 15 C with a gusty wind. We had all been issued with specialist cold weather gear and I was proudly wearing my brand new trapper hat with faux fur ear flaps. We found four or five bears investigating the smells emanating from the research station and settled down a hundred yards or so away to watch them.

Sustained by large mugs of hot chocolate we ventured out onto the rear deck now and again to photograph these amazing animals but did not linger long in minus 15 C with a wind chill factor. Towards the end of the evening I went out onto the deck for a last look at the bears who were now moving away. A sudden gust of arctic wind not only took my breath away it also blew my hat off my head and over the side of the vehicle. To much amusement I explained what had happened. Lisa, obviously used to idiot visitors who drop things simply produced a very long hooked pole and we went "fishing". The bears had now moved well away but just as Lisa hooked my hat a polar bear appeared from the darkness behind us, picked up the hat and after playing with it for a few minutes decided to eat it. I was concerned that the man-made fibres of the hat might be bad for the bear but was assured that their constitution was robust enough to cope with it.

The bear wandered off into the night and I bought another hat!



(answers at the bottom of the page)

BRAIN TEASERS SPRING QUIZ

1. What date is Saint Patrick's Day?
2. To the nearest million, how many Easter eggs are sold every year in the UK?
3. What spring flower is often associated with Wales?
4. What is the spring holiday period for college students in the United States known as?
5. Which is the meteorological first day of spring?
6. Which breed of rabbit is known for the thick tufty fur around its head?
7. What UK holiday commonly takes place on May 1st?
8. In Japan, what type of tree famously produces blossom in the spring?
9. How many months are female sheep pregnant for before they give birth to a lamb?
10. Which small white flowers are among the first to emerge in the UK spring?



WHY IS THE LETTER "A" LIKE A FLOWER?

BECAUSE A BEE COMES AFTER IT!

1. 17th March
2. 80 million
3. The daffodil
4. Spring Break
5. 1st March
6. Lionhead Rabbit
7. May Day
8. Cherry tree
9. 5 months
10. Snowdrops